

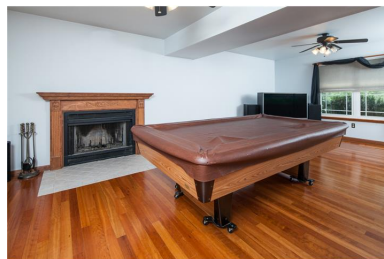


## PICTURESQUE VIEWS FROM A PRIVATE BACKYARD!



**443 Llangollen Blvd, New Castle, DE • 3 Bedrooms, 2.5 Bathrooms • 1,800 Sq. Feet**

Enjoy coming home to this beautiful haven nestled on a large level lot in New Castle! This 3 bedroom, 2.5 bathroom house with a bonus room that can be used as an office or spare bedroom. As you enter the home, you will be enticed by the desirable openness and welcoming feel of the living and dining room. In the well appointed kitchen, any chef would be thrilled with the new cabinetry, tile flooring and updated appliances. Disappear to your master bedroom suite which grants solitude and quiet. You are sure to love the spacious closet and renovated bathroom. A second and third bedroom are just waiting for your own personal touches with wall-to-wall carpeting, ceiling fans and spacious closets. End your day in the awesome family room which is spacious and offers a fireplace, hardwood flooring and two small refrigerators, one beer or soda and one for wine. This will soon become your favorite part of the house. Another bedroom on this level will be perfect for guests or as a home office. The private backyard provides picturesque views and an above ground swimming pool with a nice wood deck. A beautiful Trex deck will be great for grilling and outside entertaining. Additional upgrades include; flooring, a hot water heater, siding, windows and appliances. Conveniently located close to I95 for easy access to major shopping venues, Wilmington and Philadelphia and to public transportation, this home is in a great location. With county property on both sides of this home, with no homes to be built, don't let this rare opportunity slip away!



1521 Concord Pike, Suite 102  
Wilmington DE 19803  
[www.kghometeam.com](http://www.kghometeam.com)  
Direct: (302)299-1122 • (302)299-1100

