

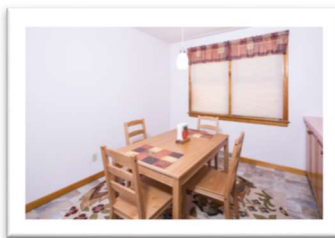
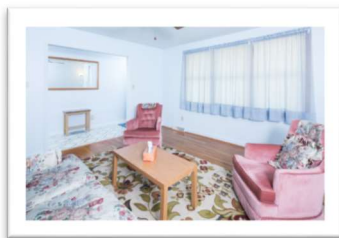


**Wonderful Location with
Wow-Factor Throughout!**



2516 Tigani Drive, Wilmington, DE 19808 / 3 Bedrooms • 1.5 Bath • 1,700 Sq./Ft

Pride of ownership is more than evident at this nicely kept, all brick ranch home in a desirable neighborhood. As soon as you step out of your vehicle you'll be impressed by recently replaced concrete in the driveway, the front steps and the front walkway. You're invited inside by charming ambiance. Wonderful hardwood floors grace most of the main floor. Large, wood framed windows in the living room and dining room provide plenty of natural light. The remodeled country kitchen is open and airy, boasting 42" natural wood cabinets, new appliances, tons of cabinets and counter space, stylish flooring, a ceiling fan and overlooks the dining area. Off the kitchen you will find this home's unique Three Season room, perfect for relaxing with a great book or enjoying with guests. All three bedrooms are conveniently located on the main level offering ceiling fans, warm, beautiful hardwood floors and wood framed windows. Visit the lower level of this remarkable home and you find a large, comfortable family room as well as an amazing bonus room that could be used for a theater room, an extra bedroom, a home office, a second family room...the possibilities are limitless. The closet space on this level will impress you thoroughly. You will also find a powder room, a laundry room and workshop on this level. The front yard is perfectly landscaped and the lush backyard is fully fenced and ready for you to make your own. The steel front and rear entry doors have recently been replaced. The water heater is new (2016). The roof and heater are both only 6 years old. You'll love living within walking distance to stores, banks, public transportation, etc. This is a rare opportunity to own an excellent, clean, solid home that is move-in ready. See it today!



**1521 Concord Pike, Suite 102
Wilmington DE 19803
www.kghometeam.com
Direct: (302) 299-1122 • (302)299-1100**

