

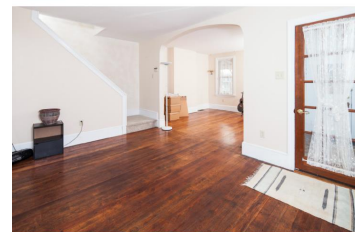


CHARMING FARMHOUSE NEAR DOWNTOWN WILMINGTON!



122 N. Dupont Road, Wilmington, DE • 5 Bedrooms, 1.5 Bathrooms • 1,675 Sq. Feet

Charming 3-story, 5 bedroom twin home with all the privacy and space of a single! Very unique Farmhouse style property situated on a large lot outside the town of Elsmere. This home has been well cared for and the Exterior has been freshly painted so bring your stuff and move right in! Far from small, you will agree that every room has a spacious feel with lots of room to grow. Arrive upon the beautiful front porch that leads to an enclosed entry way, giving you that southern charm feel. You will notice the large open floor plan with lots of light, nice hardwoods throughout and a half bath on this level. The kitchen has ample space for casual dining or you can retreat to the attached Sunroom to watch the wildlife right outside your door. This home is an outdoor lovers dream with lots of trees and shrubs in the surrounding gardens! The 2nd floor has 3 spacious bedrooms and a full bath. The 3rd floor has 2 more large bedrooms plus a walk in closet, perfect for guests or residents to make their own. Updates include: Roof, HVAC, windows, Re-built front porch and Exterior painting. Come see this hidden Gem, conveniently located to downtown Wilmington, major roads, shopping and dining.



1521 Concord Pike, Suite 102
Wilmington DE 19803
www.kghometeam.com
Direct: (302)299-1122 • (302)299-1100

